

# ↗ DOMETIC SANITATION PUMPS

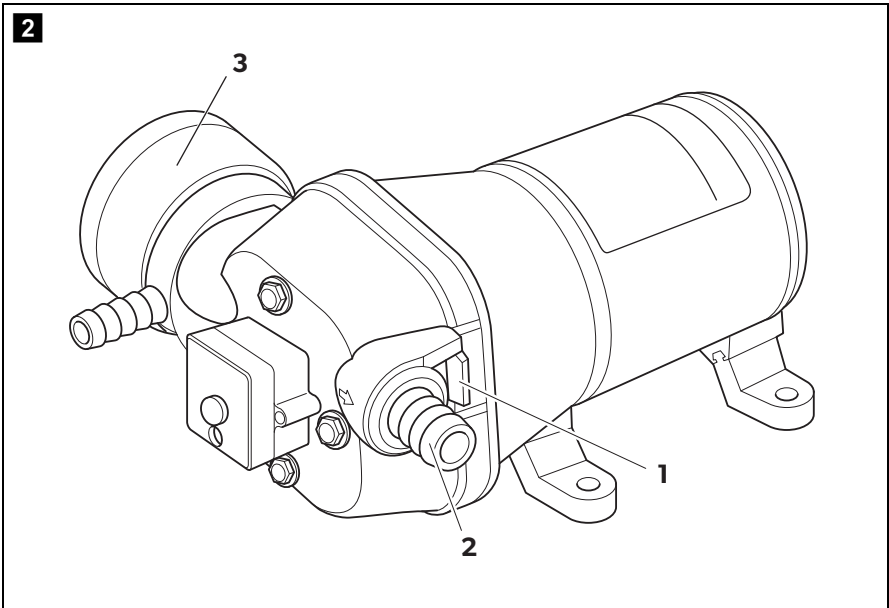
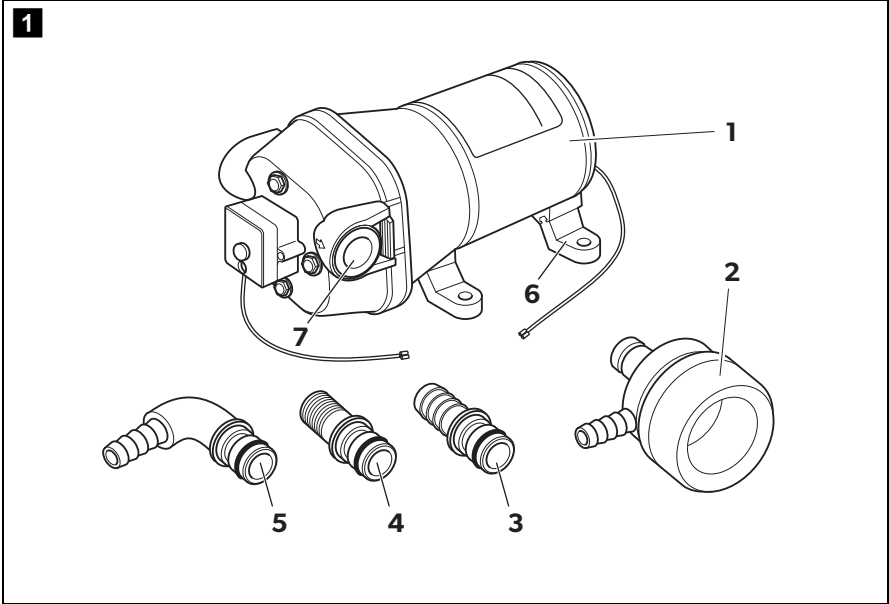


PP127, PP1210, PP1217

<b>EN</b>	<b>Water pressure pump</b> Installation and Operating Manual . . . . . 4
<b>DE</b>	<b>Druckwasserpumpe</b> Montage- und Bedienungsanleitung . . . . . 12
<b>FR</b>	<b>Pompe à eau pressurisée</b> Instructions de montage et de service . . . . . 20
<b>ES</b>	<b>Bomba de agua a presión</b> Instrucciones de montaje y de uso . . . . . 28
<b>PT</b>	<b>Bomba de água de pressão</b> Instruções de montagem e manual de instruções . . . . . 36
<b>IT</b>	<b>Pompa idraulica a pressione</b> Istruzioni di montaggio e d'uso . . . . . 44
<b>NL</b>	<b>Drukwaterpomp</b> Montagehandleiding en gebruiksaanwijzing . . . . . 52

<b>DA</b>	<b>Trykvandspumpe</b> Monterings- og betjeningsvejledning . . . . . 60
<b>SV</b>	<b>Tryckvattenpump</b> Monterings- och bruksanvisning . . . . . 68
<b>NO</b>	<b>Trykkvannpumpe</b> Monterings- og bruksanvisning . . . . . 76
<b>FI</b>	<b>Painevesipumppu</b> Asennus- ja käyttöohje . . . . . 84
<b>RU</b>	<b>Нагнетательный водяной насос</b> Инструкция по монтажу и эксплуатации . 92
<b>PL</b>	<b>Cisnieniowa pompa wodna</b> Instrukcja montażu i obsługi . . . . . 100
<b>SK</b>	<b>Tlakové vodné čerpadlo</b> Návod na montáž a uvedenie do prevádzky . . . . . 108
<b>CS</b>	<b>Tlakové vodní čerpadlo</b> Návod k montáži a obsluze . . . . . 116
<b>HU</b>	<b>Nagynyomású vízszivattyú</b> Szerelési és használati útmutató . . . . . 124





**Please read this instruction manual carefully before installation and first use, and store it in a safe place. If you pass on the product to another person, hand over this instruction manual along with it.**

## Table of contents

1	Explanation of symbols . . . . .	5
2	Safety notes . . . . .	5
3	Scope of delivery . . . . .	7
4	Intended use . . . . .	7
5	Technical description . . . . .	7
6	Installing and connecting the pump . . . . .	8
7	Using the pump. . . . .	9
8	Cleaning and caring for the pump . . . . .	9
9	Troubleshooting . . . . .	10
10	Warranty . . . . .	10
11	Disposal . . . . .	11
12	Technical data . . . . .	11

# 1 Explanation of symbols

**DANGER!**

**Safety instruction:** Failure to observe this instruction will cause fatal or serious injury.

**WARNING!**

**Safety instruction:** Failure to observe this instruction can cause fatal or serious injury.

**CAUTION!**

**Safety instruction:** Failure to observe this instruction can lead to injury.

**NOTICE!**

Failure to observe this instruction can cause material damage and impair the function of the product.

**NOTE**

Supplementary information for operating the product.

# 2 Safety notes

The manufacturer accepts no liability for damage in the following cases:

- Faulty assembly or connection
- Damage to the product resulting from mechanical influences and excess voltage
- Alterations to the product without express permission from the manufacturer
- Use for purposes other than those described in the operating manual

## 2.1 General safety



### **DANGER!**

- Before you use the device for the first time, check that the operating voltage matches the mains voltage (see type plate).



### **WARNING!**

- Do not operate the device if it is visibly damaged.
- This appliance may only be repaired by qualified personnel. Inadequate repairs may cause serious hazards. Should your appliance need to be repaired, please contact customer services.
- Persons whose physical, sensory or mental capabilities or whose lack of experience and knowledge prevent them from using the device safely should not use it without supervision or instruction by a responsible person.
- **Electrical appliances are not toys.** Always keep the device out of the reach of children.
- Children must be supervised to ensure that they do not play with the device.
- If this device's connection cable is damaged, it must be replaced by the manufacturer, customer service or a similarly qualified person in order to prevent safety hazards.

## 2.2 Operating the device safely



### **WARNING!**

- Never use the device in rooms where flammable materials are stored or flammable gases have built up. Sparks from the motor could ignite them.



### **NOTICE!**

- Only use the device indoors, never outside.
- Never expose the device to moisture.

### 3 Scope of delivery

No. in fig. 1, page 3	Quantity	Description
1	1	Pump
2	1	Coarse filter
3, 4, 5	1	Adapter
6	4	Fastening feet
7	2	Plugs
–	1	Installation and operating manual

### 4 Intended use

The Dometic PowerPump water pressure pump PP127 (ref. no. 9600000455), PP1210 (ref. no. 9600000456), PP1217 (ref. no. 9600000457), is intended to be used as part of a water system.

The device is suitable for providing water. The pump must not be used for supplying salt water.

### 5 Technical description

The pump is activated via an in-built pressure switch. When drawing water at the supply point, the pump is turned on.

## 6 Installing and connecting the pump

### 6.1 Installing the pump

**NOTICE!**

Choose an installation location where the pump will be protected from water penetration and moisture.

**NOTE**

When selecting the installation location, note the following:

- The pump can be installed either horizontally or vertically (with the pump motor at the top).
- A coarse filter must be used in the pump inlet. If you install the pump in a place which is not readily accessible, instead of using the coarse filter provided (which is inserted directly onto the pump) you can use a different coarse filter in a more accessible place.

- Remove the plugs (fig. **1** 7, page 3) from the connections.
- If necessary, open the slide valves (fig. **2** 1, page 3) on the inlet and outlet.
- Insert the coarse filter (fig. **2** 3, page 3) in the inlet and a suitable adapter (fig. **2** 2, page 3) in the outlet.
- Lock the adapter and coarse filter with the slide valve (fig. **2** 1, page 3).
- Slide the four fastening feet (fig. **1** 6, page 3) into the holders.
- Install the pump in a vibration-free location using suitable fastening materials.

### 6.2 Connecting the pump to the water system

- Connect the pump to the water system using suitable pressure-proof connection hoses ( $1/2$ ").
- Fix the hoses to the connections using hose clamps.
- In the water system, attach pipes of at least  $3/8$ " to the fittings.



## 6.3 Connecting the pump electrically



### CAUTION!

Only use cables with the following cable cross section:

- 2.5 mm<sup>2</sup> for cable lengths of up to 6 m
- 4 mm<sup>2</sup> for cable lengths of more than 6 m

- Connect the red positive cable and the black negative cable to the 12 or 24 V power supply.
- Install a sufficient fuse in the positive cable, see chapter “Technical data” on page 11.

## 7 Using the pump

- Open the supply point.
- ✓ The pump automatically turns on and pumps water.
- Close the supply point.
- ✓ The pump automatically turns off again.

## 8 Cleaning and caring for the pump



### WARNING! Danger of electrocution!

Always disconnect the mains plug before you clean and service the device.



### NOTICE! Danger of damaging the device!

Never clean the device under running water or in dish water.  
Do not use abrasive cleaning agents or hard objects during cleaning as these can damage the device.

- Occasionally clean the device with a damp cloth.

## 9 Troubleshooting

Fault	Possible cause	Suggested remedy
The pump sputters.	The water flow is restricted.	Check whether the pipe system is blocked. Check whether the pipes are too small.
The pump suction does not work.	The pump has run dry.	Fill the water tank.
	The pump supply pipe is blocked.	Clean the pump supply pipe. Clean the coarse filter.
	The pipe system is leaking and drawing in air.	Seal the pipe system.
The motor will not start.	The voltage supply has been interrupted.	Check the voltage supply.
	The fuse has blown.	Replace the fuse.
	The integrated switch is defective.	Contact your specialist dealer.
	The motor is defective.	Contact your specialist dealer.
The pump does not switch off.	The tank is empty.	Fill the water tank.
	The pressure monitor is faulty.	Contact your specialist dealer.

## 10 Warranty

The statutory warranty period applies. If the product is defective, please contact your retailer or the manufacturer's branch in your country (see the back of the instruction manual for the addresses).

For repair and guarantee processing, please include the following documents when you send in the device:

- A copy of the receipt with purchasing date
- A reason for the claim or description of the fault

## 11 Disposal

- Place the packaging material in the appropriate recycling waste bins wherever possible.



If you wish to finally dispose of the product, ask your local recycling centre or specialist dealer for details about how to do this in accordance with the applicable disposal regulations.

## 12 Technical data

	<b>PP127</b>	<b>PP1210</b>	<b>PP1217</b>
Ref. no.:	9600000455	9600000456	9600000457
Connection voltage:	12 V $\overline{=}$	12 V $\overline{=}$	12 V $\overline{=}$
Water flow:	7 l/min	10 l/min	17 l/min
Pressure:	1.4 bar	2.1 bar	2.8 bar
Operating current:	2.2 A	3.0 A	6.0 A
Required fuse:	10 A	10 A	25.0 A
Maximum current:	4.5 A	4.8 A	15.0 A
Weight:	2.2 kg	2.2 kg	2.2 kg

**Bitte lesen Sie diese Anleitung vor Einbau und Inbetriebnahme sorgfältig durch und bewahren Sie sie auf. Geben Sie sie im Falle einer Weitergabe des Produktes an den Nutzer weiter.**

## **Inhaltsverzeichnis**

1	Erklärung der Symbole .....	13
2	Sicherheitshinweise .....	13
3	Lieferumfang .....	15
4	Bestimmungsgemäßer Gebrauch .....	15
5	Technische Beschreibung .....	15
6	Pumpe montieren und anschließen .....	16
7	Pumpe benutzen .....	17
8	Pumpe pflegen und reinigen .....	17
9	Fehlerbeseitigung .....	18
10	Gewährleistung .....	18
11	Entsorgung .....	19
12	Technische Daten .....	19

Mobile living made easy.

---



**dometic.com**

---

**YOUR LOCAL  
DEALER**

**[dometic.com/dealer](https://dometic.com/dealer)**

**YOUR LOCAL  
SUPPORT**

**[dometic.com/contact](https://dometic.com/contact)**

**YOUR LOCAL  
SALES OFFICE**

**[dometic.com/sales-offices](https://dometic.com/sales-offices)**

---

A complete list of Dometic companies, which comprise the Dometic Group, can be found in the public filings of:  
**DOMETIC GROUP AB** Hemvärnsgatan 15 SE-17154 Solna Sweden